



Facade Light

Facade Light

- Wall washing lighting on building surface
- Indoor and outdoor special-shaped structure wall washing decoration lighting
- Jewelry lighting

IEC 62717 LED-modules for general lighting – Performance requirements  
IEC 62722-2-1 Particular requirements for LED luminaires

High Lumen Efficacy

Body - Food grade silicone material, environmental protection, high light transmittance, ultraviolet radiation resistance, yellowing resistance, strong weather resistance

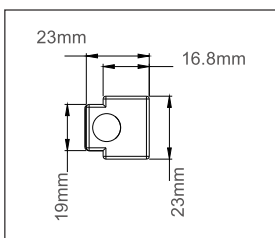
Glowing Wire Test - 850°

Temperature - ta=-20 °C ~ ta max=65 °C

**FIELDS OF APPLICATION**

Outdoor Gardens, Parks, Pathways,

Model --- **F 16**



Default Available

**20F16-G-30-20-0-A**



Product Assistant Chart

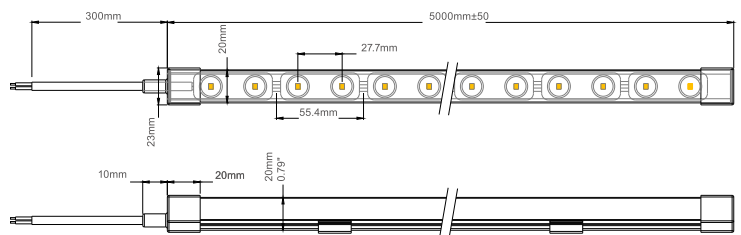
**F 16 X X X X X**

- Size: A
- Driver: 0 (On/Off), 1 (Dali), 2 (Dimmable), 3 (Phase Dimming), 4 (1-10)
- Beam Angle: 20°, 30°, 45°, 10x30°
- Kelvin: 27 (2700K), 30 (3000K), 40 (4000K), 60 (6000K), R (RED), G (GREEN), B (BLUE)
- Finishing: W (WHITE)
- Wattage: 20W/M

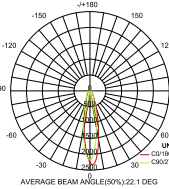
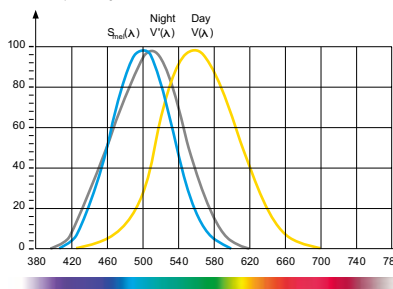
**A** - As stated in drawing

Lighting Customization Solution can offer you modifications for environment with higher options as a customized product.

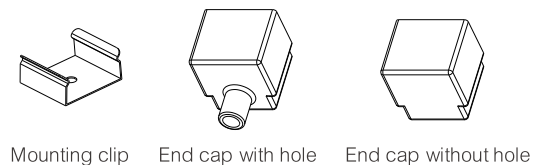
IP 65    IK 06    SMD    McA Step 2 / 3    24 DC



**Relative spectral perception of brightness and melanopic effect**  
Effect as a percentage



Explanation of the three curves:  
V(A) = Perception of brightness, daytime seeing with the cones  
V(A) = Night-time seeing with the rods  
S<sub>m</sub>(A) = Melatonin suppression with the photosensitive ganglion cells



LED life time		Operating time 1.000 h										
Lamp Lumen Maintenance Factor	Lamp Survival Factor	1	10	20	30	40	50	60	70	80	90	100
L80	50.000 h	LLMF	1	0.96	0.92	0.88	0.84	0.80	0.76	0.72	0.68	0.64
		LSF	1	1	1	1	1	1	0.99	0.99	0.99	0.98
L80	100.000 h	LLMF	1	0.98	0.96	0.94	0.92	0.90	0.88	0.86	0.84	0.82
		LSF	1	1	1	1	1	1	1	0.99	0.99	0.99



LED

CR> 90

series wiring



CE



## CUTTING OPERATIONS

**Step 01** Use scissors to cut from the connection of two PCBs, as shown in Figure 1

Figure 1

**Step 02** Fill the end cap with glue, and insert the light strip into the end cap. After installation, as shown in Figure 2:

Glue is applied to the inner wall of the 4 sides of the plug and filled into the bottom slot of the plug

Figure 2

**Step 03** Cut off the rubber sleeve on the first set of LED board, expose the solder pad without cutting the wire, and weld the PCB board off, as shown in Figure 3:

Figure 3

**Step 04** Butt-weld the power line and the light strip, pay attention to the positive and negative poles, and insulate the positive and negative poles, as shown in Figure 4:

Figure 4

**Step 05** Insert the end cap into the wire, repeat the gluing procedure in Figure 2, and then insert the light strip into the end cap, as shown in Figure 5:

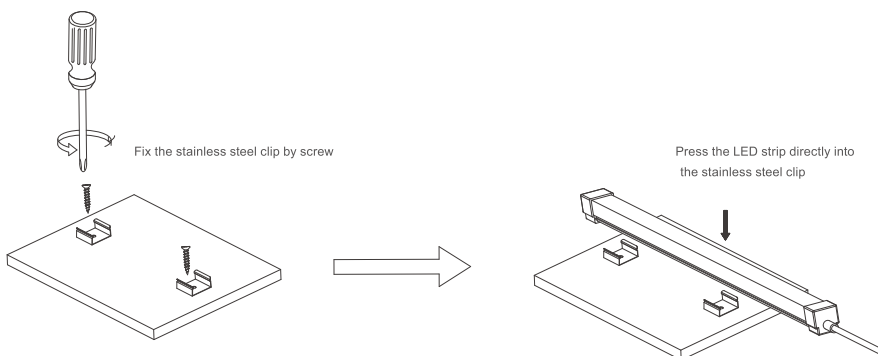
Figure 5

**Step 06** Then the installation is completed, as shown in Figure 6:

Figure 6

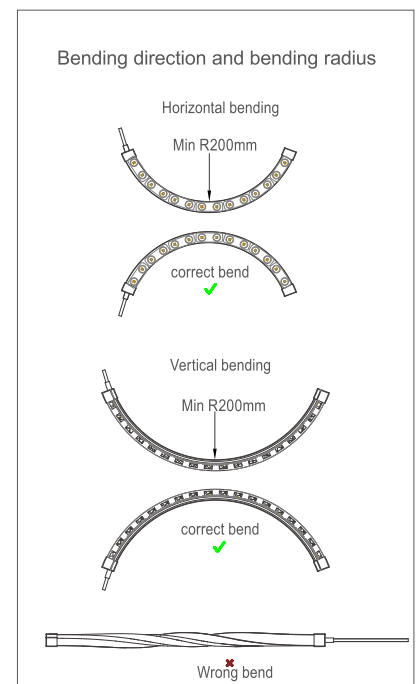
## LUMINAIRE INSTALLATION DIAGRAM

- (1) Locate the installation at the wall where it needs to be installed;
- (2) Screw the mounting clip and fix it at the installation position;
- (3) After fixing the clip take out the LED strip and press it in.



**Note:**

It is recommended to install the LED strip 5cm above the wall surface to obtain the best lighting effect;  
It is recommended to use M4 self tapping screws to fix the mounting clip;  
4 PCS clips for conventional 1M LED strip



LED

CR>90

series wiring



CE

