



Simple and easy appearance, in line with contemporary aesthetic concept. The product has the structure and appearance design patent. The lamp body adopts high-pressure cast aluminum and aluminum alloy, the surface is coated with outdoor used powder, double anti-corrosion to extend service life. This lawn lamp series uses LED. High efficiency constant current driver, ensure the light source is maximum used.

IEC 62717 LED-modules for general lighting – Performance requirements  
IEC 62722-2-1 Particular requirements for LED luminaires

High Lumen Efficacy  
Body - 10mm white PCB, Waterproof  
Glowing Wire Test - 850°  
Temperature - ta=20 °C ~ ta max=50 °C  
Class - I

**Installations**

Surface (floor, wall, ceiling)

**LED Motion Sensor Waterproof Light Strip**

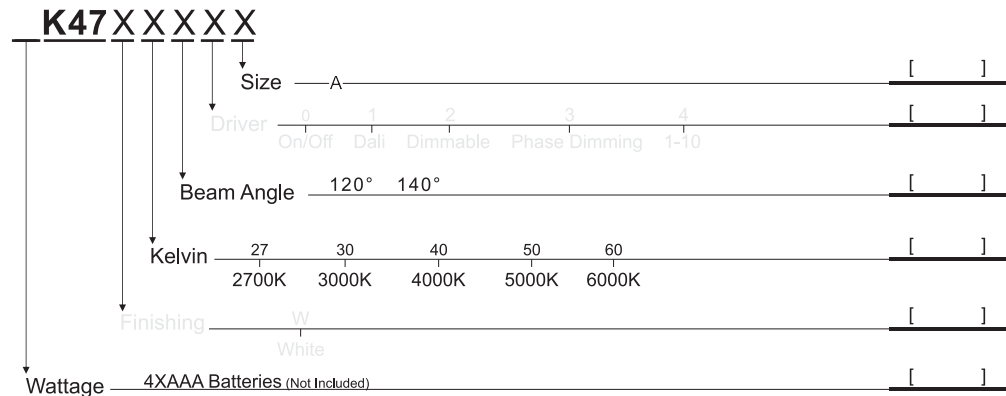
Model ----- **K47**



Default Available

**AAK47-30-120-A**

Product Assistant Chart

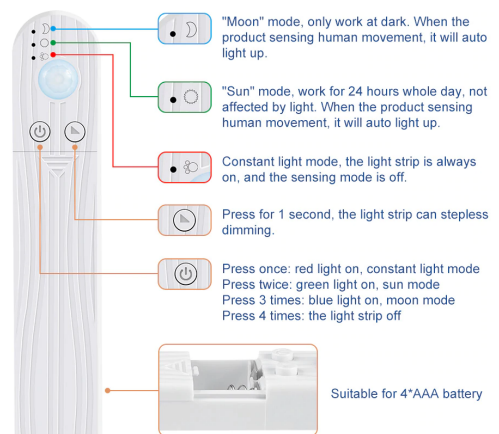
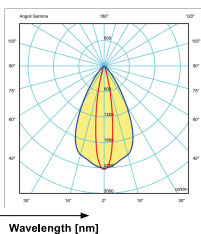
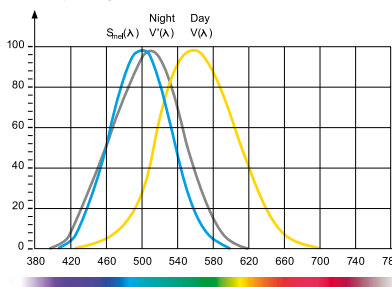


- A - 1000 - 60 Led's**
- B - 2000 - 120 Led's**
- C - 3000 - 180 Led's**

Lighting Customization Solution can offer you modifications for environment with higher options as a customized product.

IP20 / 65 / 66 / 67 / 68    LED's / M 60 / 120 / 180    SMD 2835    McA Step 3    5V

Relative spectral perception of brightness and melanopic effect  
Effect as a percentage



Explanation of the three curves:  
V(A) = Perception of brightness, daytime seeing with the cones  
V(A) = Night-time seeing with the rods  
S<sub>m</sub>(A) = Melatonin suppression with the photosensitive ganglion cells

LED life time			Operating time 1.000 h										
Lamp Lumen Maintenance Factor			1	10	20	30	40	50	60	70	80	90	100
Lamp Survival Factor			1	1	1	1	1	1	1	1	0.99	0.99	0.99
L80	50.000 h	LLMF	1	0.96	0.92	0.88	0.84	0.80	0.76	0.72	0.68	0.64	0.60
		LSF	1	1	1	1	1	1	0.99	0.99	0.99	0.99	0.98
L80	100.000 h	LLMF	1	0.98	0.96	0.94	0.92	0.90	0.88	0.86	0.84	0.82	0.80
		LSF	1	1	1	1	1	1	1	0.99	0.99	0.99	0.99



LED



series wiring

