



Flex Led Neon is design is both weather resistant and robust. The Flex Led is available in a range of whites and colours that can be tailored to your installation. The PVC construction is UV and salt water resistant for harsh out door environments, the Flex Led Neon Flex also meets fire safety standards. To complement your installation we also offer a range of accessories.

**FIELDS OF APPLICATION**

Office & Education, offices, open-plan offices, conference rooms, conference rooms, reception areas, counters, galleries, hotels, restaurants, living spaces

IEC 62717 LED-modules for general lighting – Performance requirements  
IEC 62722-2-1 Particular requirements for LED luminaires

High Lumen Efficacy 100lm/W  
Body - White PCB, Waterproof  
Glowing Wire Test - 850°  
Temperature - ta=-40 °C ~ ta max=55 °C  
Class - III

Model ----- **K75**

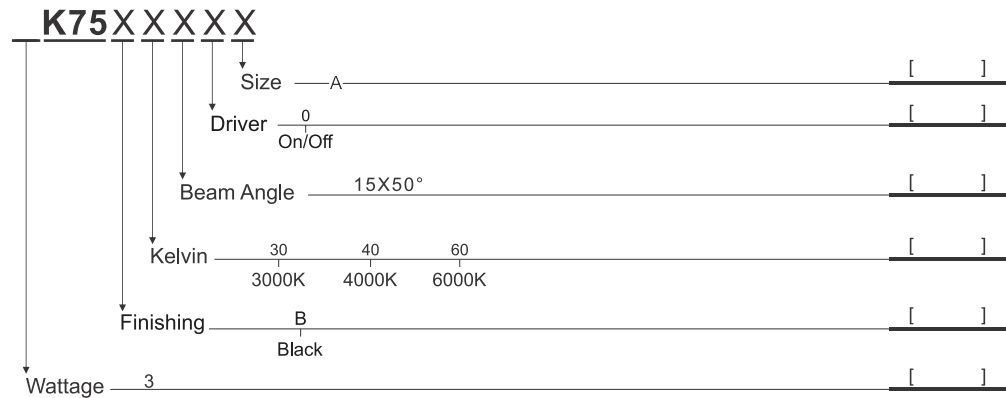


**A** - Length 316 X 55mm

Default Available

**3K75-B-30-15x50-0-A**

Product Assistant Chart

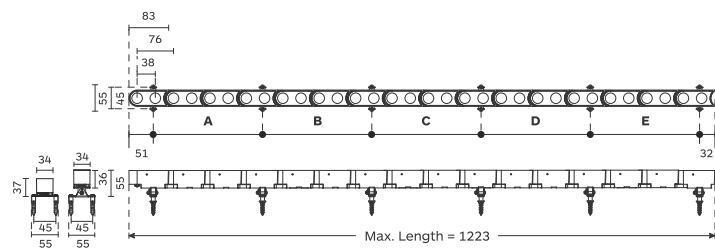
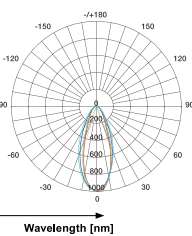
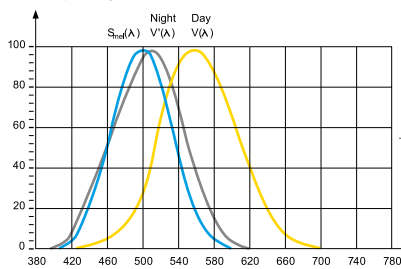


Lighting Customization Solution can offer you modifications for environment with higher options as a customized product.

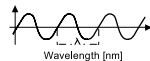
IP 66 IK 08 LED McA Step 4 24V

**Relative spectral perception of brightness and melanopic effect**

Effect as a percentage



Explanation of the three curves:  
V(A) = Perception of brightness, daytime seeing with the cones  
V(A) = Night-time seeing with the rods  
S<sub>m</sub>(A) = Melatonin suppression with the photosensitive ganglion cells



LED life time		Operating time 1.000 h										
Lamp Lumen Maintenance Factor	Lamp Survival Factor	1	10	20	30	40	50	60	70	80	90	100
L80	50.000 h	LLMF	1	0.96	0.92	0.88	0.84	0.80	0.76	0.72	0.68	0.64
		LSF	1	1	1	1	1	1	0.99	0.99	0.99	0.98
L80	100.000 h	LLMF	1	0.98	0.96	0.94	0.92	0.90	0.88	0.86	0.84	0.82
		LSF	1	1	1	1	1	1	1	0.99	0.99	0.99

