



Inground Light





Inground Light

Simple and easy appearance, in line with contemporary aesthetic concept. The product has the structure and appearance design patent. The lamp body adopts high-pressure cast aluminum and aluminum alloy, the surface is coated with outdoor used powder, double anti-corrosion to extend service life. This lawn lamp series uses LED. High efficiency constant current driver, ensure the light source is maximum used.

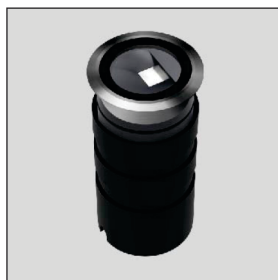
IEC 62717 LED-modules for general lighting – Performance requirements
IEC 62722-2-1 Particular requirements for LED luminaires

High Lumen Efficacy
Body - Die cast extruded aluminum
Diffuser - Polycarbonate
Glowing Wire Test - 650°
Temperature - ta=20 °C ~ ta max=50 °C
Class - I

FIELDS OF APPLICATION
Outdoor Areas

Optional optical diffusers -  Clear  Frosted

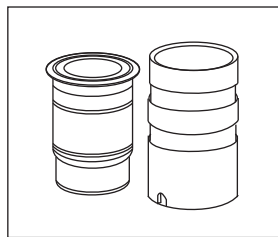
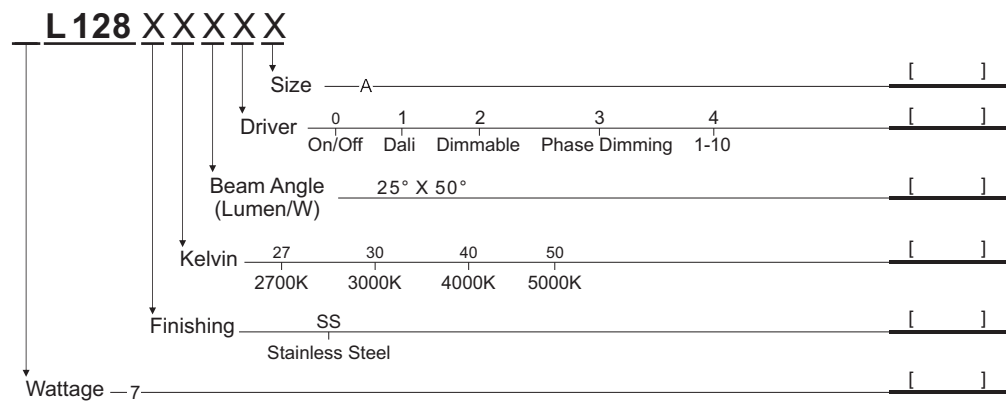
Model ---- L128



Default Available

7L128-SS-30-30-0-A 

Product Assistant Chart



A - Ø77 X 102.5mm

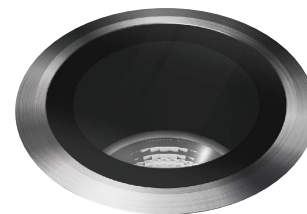
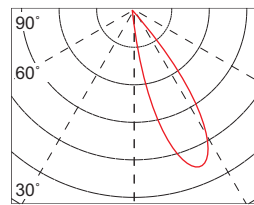
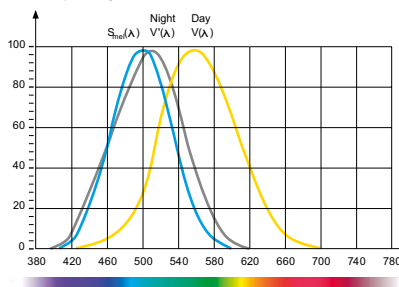
B - Box - Ø73 X 120

Lighting Customization Solution can offer you modifications for environment with higher options as a customized product.

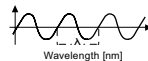
IP 67 IK 08 COB McA Step 3 120~277V

Relative spectral perception of brightness and melanopic effect

Effect as a percentage



Explanation of the three curves:
V(A) = Perception of brightness, daytime seeing with the cones
V(A) = Night-time seeing with the rods
S_m(A) = Melatonin suppression with the photosensitive ganglion cells



LED life time		Operating time 1.000 h											
Lamp Lumen Maintenance Factor	Lamp Survival Factor	1	10	20	30	40	50	60	70	80	90	100	
L80	50.000 h	LLMF	1	0.96	0.92	0.88	0.84	0.80	0.76	0.72	0.68	0.64	0.60
		LSF	1	1	1	1	1	1	0.99	0.99	0.99	0.99	0.98
L80	100.000 h	LLMF	1	0.98	0.96	0.94	0.92	0.90	0.88	0.86	0.84	0.82	0.80
		LSF	1	1	1	1	1	1	1	0.99	0.99	0.99	0.99



LED

CR>90

series wiring



CE

