



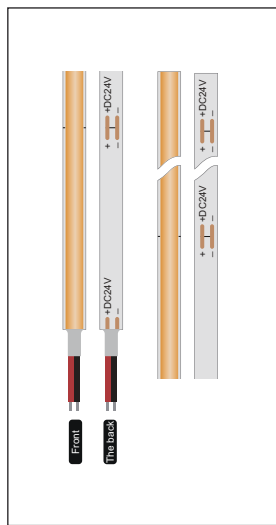
FIELDS OF APPLICATION

LED installations are versatile and widely used across various fields, including facade lighting for architectural enhancement, branding, urban spaces, and retail/hospitality exteriors; office and education environments such as open-plan offices, conference rooms, reception areas, and corridors; commercial and hospitality settings like hotels, restaurants, bars, retail stores, and galleries; residential spaces including living rooms, bedrooms, kitchens, and hallways; and cultural & exhibition spaces such as museums, theaters, auditoriums, and showrooms. They provide energy-efficient, customizable, and smart lighting solutions for both functional and decorative purposes in indoor and outdoor applications.

IEC 62717 LED-modules for general lighting – Performance requirements
IEC 62722-2-1 Particular requirements for LED luminaires

High Lumen Efficacy 560 ~ 630lm/M
Body - High quality double sided copper
Glowing Wire Test - 850°
Temperature - ta=-25 °C ~ ta max=45 °C

Model --- **K103**



A - W5mm X L5000mm
Cut Distance: 50mm

Default Available

7K103-W-30-180-0-A

Product Assistant Chart

K103XXXXX

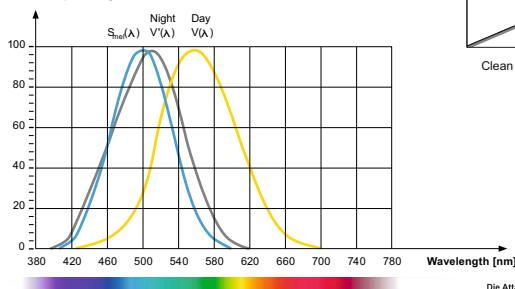
- Size: A
- Driver: 0 (On/Off), 1 (Dali), 2 (Dimmable), 3 (Phase Dimming), 4 (1-10)
- Beam Angle: 180°
- Kelvin: 30 (3000K), 40 (4000K), 50 (5000K)
- Finishing: W (White), R (Red), G (Green), B (Blue)
- Wattage: 07W/m

Lighting Customization Solution can offer you modifications for environment with higher options as a customized product.

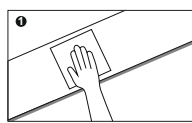
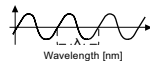
IP 65/67 LED DC24V

INSTALLATION:

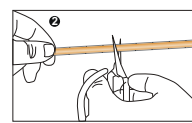
Relative spectral perception of brightness and melanopic effect
Effect as a percentage



Explanation of the three curves:
V(A) = Perception of brightness, daytime seeing with the cones
V(A) = Night-time seeing with the rods
S_m(A) = Melatonin suppression with the photosensitive ganglion cells

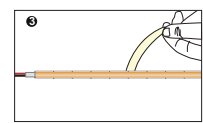


Clean the installation surface

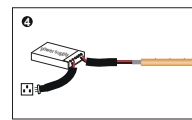


Measure the length you need to install, cut at the nearest scissor mark line.

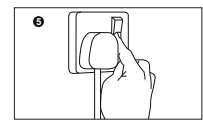
For the left led strip, weld at the next scissor mark to connect with other connection wire.



Tear off the double-sided adhesive tape on the back and paste it in a suitable position



Connect the light strip wire to the driver output port (positive pole to positive pole, negative pole to negative pole)



Turn on the power switch after confirming that the line is connected



LED life time		Operating time 1.000 h											
Lamp Lumen Maintenance Factor	Lamp Survival Factor	1	10	20	30	40	50	60	70	80	90	100	
L80	50.000 h	LLMF	1	0.96	0.92	0.88	0.84	0.80	0.76	0.72	0.68	0.64	0.60
		LSF	1	1	1	1	1	1	0.99	0.99	0.99	0.99	0.98
L80	100.000 h	LLMF	1	0.98	0.96	0.94	0.92	0.90	0.88	0.86	0.84	0.82	0.80
		LSF	1	1	1	1	1	1	1	0.99	0.99	0.99	0.99

