



TREE



TREE LIGHT

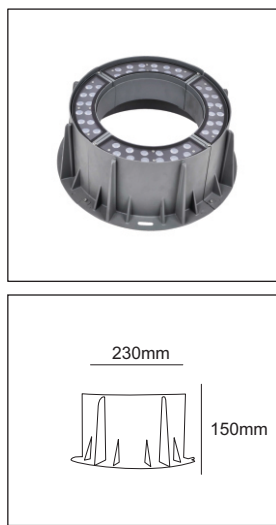
If you have a small garden or large, you must have some trees that you want to light up stunningly. Our Tree Ring Lights going to light up your tree all around with even lights without any shadow. It will not just make the trees, fabulous, also it will create an intense ambiance in your garden.

IEC 62717 LED-modules for general lighting – Performance requirements
IEC 62722-2-1 Particular requirements for LED luminaires

High Lumen Efficacy 85lm/W
Body - Aluminum
Cover - Clear Glass
Glowing Wire Test - 650°
Temperature - ta=20 °C ~ ta max=50 °C
Class - III

FIELDS OF APPLICATION
Garden Areas

Model ----- **K97**

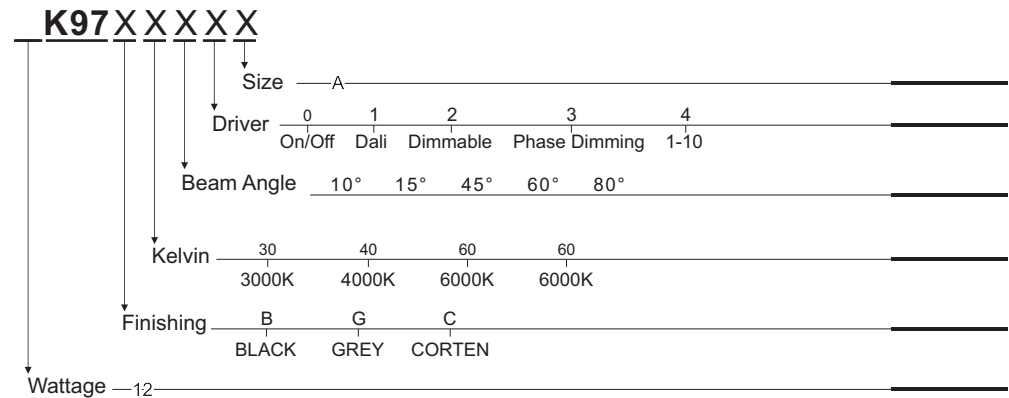


Default Available

12K97-B-30-10-0-A



Product Assistant Chart



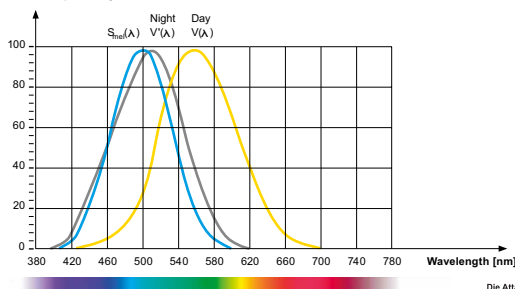
A - W230 X H150mm

Lighting Customization Solution can offer you modifications for environment with higher options as a customized product.

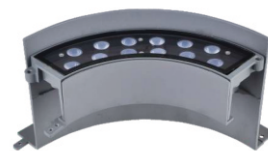
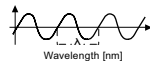
IP 67 IK 06 CREE / OSRAM McA Step 3 220-240V / DC24V

Relative spectral perception of brightness and melanopic effect

Effect as a percentage



Explanation of the three curves:
V(A) = Perception of brightness, daytime seeing with the cones
V(A) = Night-time seeing with the rods
S_m(A) = Melatonin suppression with the photosensitive ganglion cells



LED life time		Operating time 1.000 h											
Lamp Lumen Maintenance Factor	Lamp Survival Factor	1	10	20	30	40	50	60	70	80	90	100	
L80	50.000 h	LLMF	1	0.96	0.92	0.88	0.84	0.80	0.76	0.72	0.68	0.64	0.60
		LSF	1	1	1	1	1	1	0.99	0.99	0.99	0.99	0.98
L80	100.000 h	LLMF	1	0.98	0.96	0.94	0.92	0.90	0.88	0.86	0.84	0.82	0.80
		LSF	1	1	1	1	1	1	1	0.99	0.99	0.99	0.99



LED



series wiring

