



Wall luminaires

Flicker Free, Lighting coverage area is wide, Protection against water and dust, Ip65, Low Power, High light efficiency, energy savings and environmental protection.

Glass, Good light transmission, High light transmission mask to ensure uniform light, reduce the dark area of the lighting environment.

FIELDS OF APPLICATION

Villa, Corridor, Courtyard, Balcony, Doorway

IEC 62717 LED-modules for general lighting – Performance requirements
IEC 62722-2-1 Particular requirements for LED luminaires

High Lumen Efficacy 120lm/W

Body - Aluminum Body

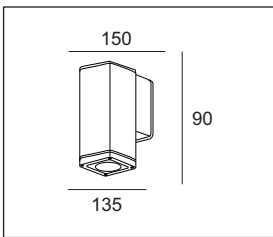
Diffuser - Glass Diffuser

Glowing Wire Test - 850°

Temperature - ta=20 °C ~ ta max=65 °C

Class - III

Model --- **W105**



A - 90 x 135 x 150mm

Default Available

12W105-W-30-36-0-A

Product Assistant Chart

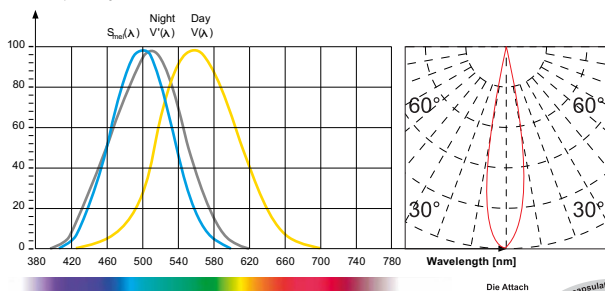
W105 X X X X X			
Size	A	[]	[]
Driver	0 1 2 3 4	[]	[]
	On/Off Dali Dimmable Phase Dimming 1-10		
Beam Angle	26° 36°	[]	[]
Kelvin	30 40 60	[]	[]
	3000K 4000K 6000K		
Finishing	B W	[]	[]
	BLACK WHITE		
Wattage Sizes	12	[]	[]

Lighting Customization Solution offer the wide range of customized product with best available options.

IP 66 IK 07 LED 220-240V

Relative spectral perception of brightness and melanopic effect

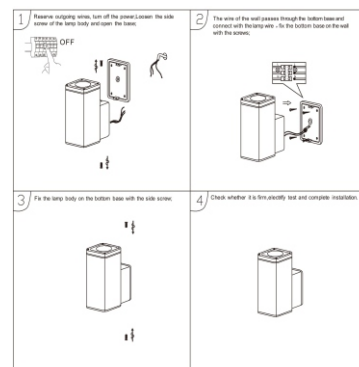
Effect as a percentage



Explanation of the three curves:
V(A) = Perception of brightness, daytime seeing with the cones
V(A) = Night-time seeing with the rods
S_m(A) = Melatonin suppression with the photosensitive ganglion cells



Installation



LED life time		Operating time 1.000 h										
Lamp Lumen Maintenance Factor	Lamp Survival Factor	1	10	20	30	40	50	60	70	80	90	100
L80	50.000 h	LLMF	1	0.96	0.92	0.88	0.84	0.80	0.76	0.72	0.68	0.60
		LSF	1	1	1	1	1	1	0.99	0.99	0.99	0.98
L80	100.000 h	LLMF	1	0.98	0.96	0.94	0.92	0.90	0.88	0.86	0.84	0.82
		LSF	1	1	1	1	1	1	1	0.99	0.99	0.99

